

GLEN PAVILION

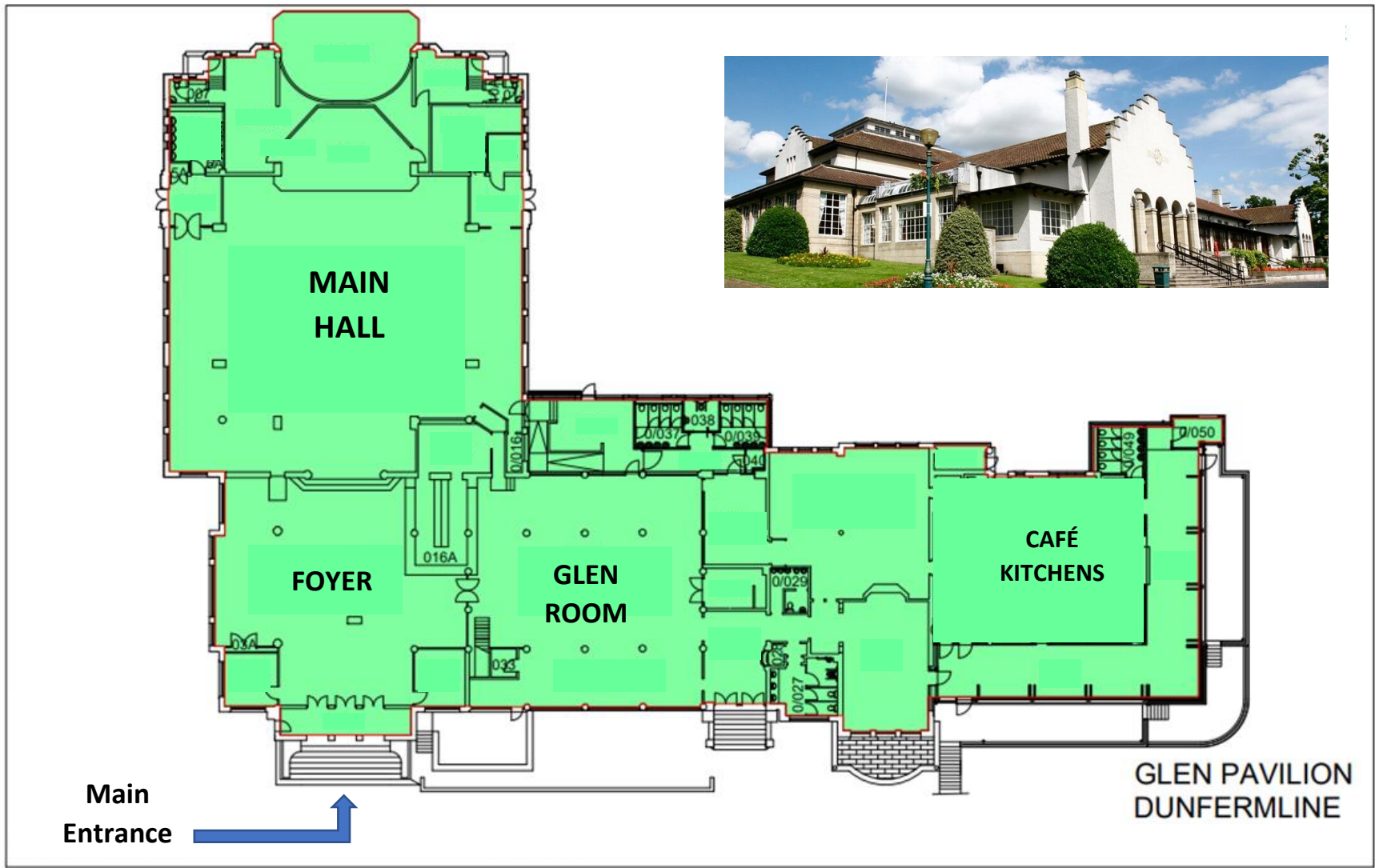


Glen Pavilion

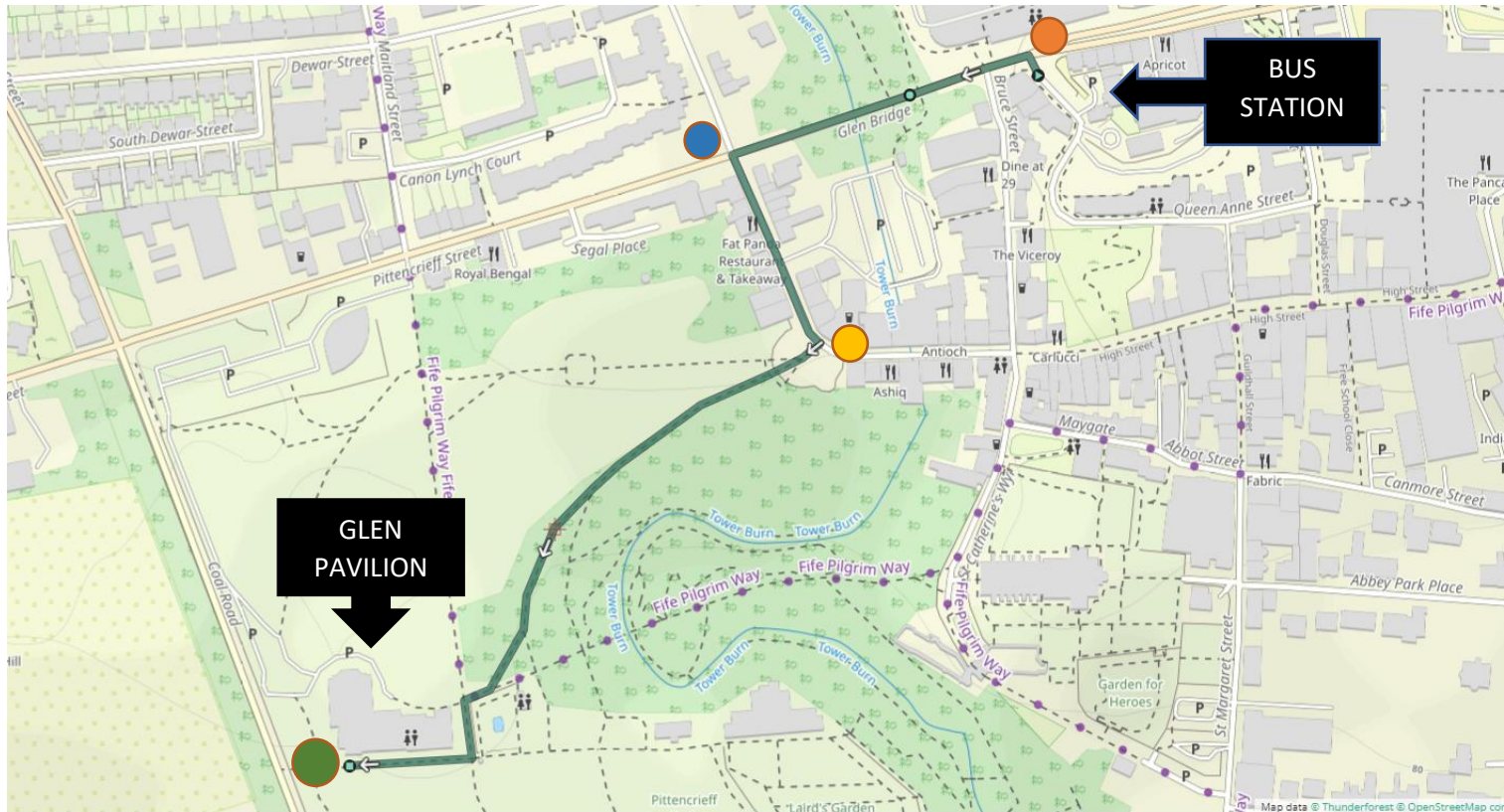
Pittencrieff Park

Dunfermline KY12 8QH

Phone: 01383 739272 / 07985 721747



Directions from Dunfermline Bus Station – Walking



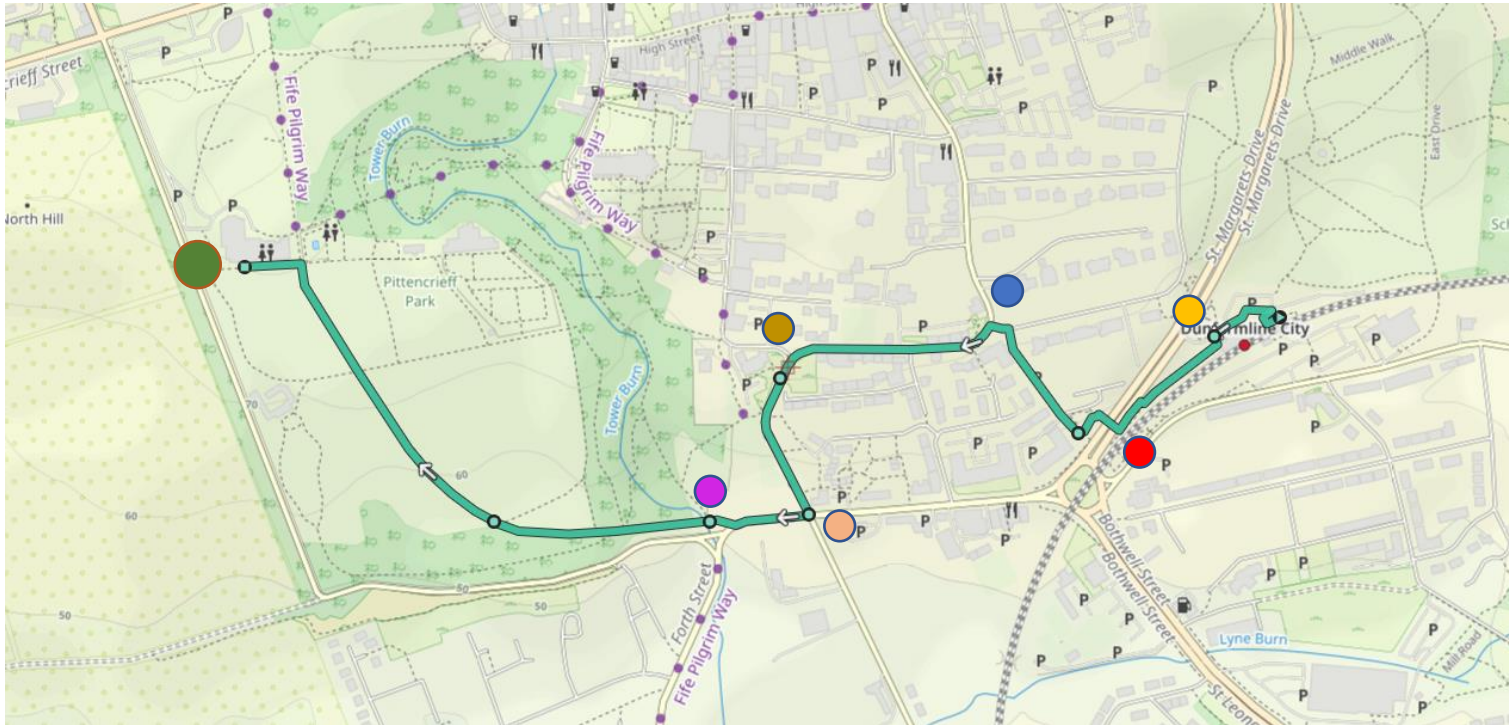
Leave the bus station at the North entrance and turn **left** ● onto Carnegie Drive.

Carry on, past Tescos on your right, and over **Glen Bridge**, and turn **left** ● onto **Chalmers Street** when you reach it.

Follow **Chalmers Street** down until you reach a large, open cobbled pedestrian area on your **right**. ● You will see the large gates of **Pittencrieff Park** across from you, these are the **Louise Carnegie Gates**.

Enter the park – there is a large map of the park installed just beyond the gates. Take the path on the left hand side of the map, following it straight down until you reach **Glen Pavilion**. ●

Directions from Dunfermline Train Station – Walking



Leave **Dunfermline Town** train station going out past the **larger station house** on the **north side** of the line, past the car park on your right and go round the back of the station house turning **left** and then **right** onto the **pedestrian walkway that follows the train line**. ●

Follow the path down until you reach a bridge over the dual carriageway (**St Margaret's Drive**). ●

Turn right onto the bridge then left after you have crossed the road.

Then turn right onto **New Row**. Go along **New Row** until it meets **Comely Park**, turn **left** onto **Comely Park** for a short bend, ● then **left** again onto **Priory Lane** which curves round to your left.

Follow **Priory Lane** along and then round, **curving left** as it becomes **Moodie Street** ● and turn right as **Moodie Street** joins **West Nethertown Street** at the crossroads. ● You will see a small parking area ahead of you, on the other side of that parking area is a pedestrian entrance to **Pittencrieff Park**. ● This is Pittencrieff Park's **Nethertown Entrance**.

Take this path and follow it until you reach **Glen Pavilion**. ●

Parking at Glen Pavilion

There is a car park with 98 spaces at the north side of the park which is accessible from Pittencrieff Street.

There is vehicular access from this car park to smaller car park closer to Glen Pavilion with about 30 spaces for staff only – there are no marked parking bays in this area for members of the public or users of the Glen Pavilion.

Neither of these car parks reserve spaces for users of Glen Pavilion.

There are 4 disabled parking spaces for public use immediately to the rear of Glen Pavilion, accessible from the second, smaller car park. These spaces are similarly not reservable by users of Glen Pavilion.

£60 penalties are charged for drivers who park anywhere in the public parking spaces outwith the marked parking bays or in disabled parking bays without a permit.

More car parking options in Dunfermline can be found by visiting this link:

https://en.parkopedia.co.uk/parking/carpark/glen_bridge/ky12/dunfermline/

Bikes at Glen Pavilion

There is a small bike rack to the rear of the Glen Pavilion for <10 bike users.

